

## Overall Rank: 41 Change: ▼ 1

### Strengths:

- Low prevalence of binge drinking
- High immunization coverage

### Challenges:

- Low high school graduation rate
- High incidence of infectious disease
- High levels of air pollution
- High rate of uninsured population

### Significant Changes:

- In the past year, per capita public health funding decreased by 22%
- In the past year, immunization coverage declined by 3%
- Since 1990, the prevalence of smoking decreased by 39%
- Since 1990, the prevalence of obesity increased by 166%

**Ranking:** Georgia is 41st this year; it was 40th in 2007.

**Strengths:** Strengths include a low prevalence of binge drinking at 12.3 percent of the population and high immunization coverage with 80.8 percent of children ages 19 to 35 months receiving complete immunizations.

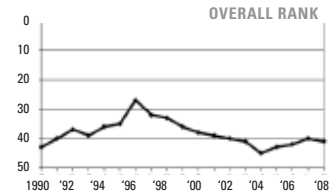
**Challenges:** Challenges include a low high school graduation rate with 61.7 percent of incoming ninth graders who graduate within four years, a high incidence of infectious disease at 29.4 cases per 100,000 population, high levels of air pollution at 15.9 micrograms of fine particulate per cubic meter and a high rate of uninsured population at 17.6 percent. Georgia ranks lower for health determinants than for health outcomes, indicating that overall healthiness may decline over time.

### Significant Changes:

- ▼ In the past year, public health funding decreased from \$96 to \$75 per person.
- ▼ In the past year, immunization coverage declined from 83.3 percent to 80.8 percent of children ages 19 to 35 months receiving complete immunizations.
- ▼ Since 1990, the prevalence of smoking decreased from 31.8 percent to 19.4 percent of the population.
- ▲ Since 1990, the prevalence of obesity increased from 10.8 percent to 28.7 percent of the population.

**Health Disparities:** In Georgia, low birth weight babies are more common among non-Hispanic blacks at 13.8 percent than non-Hispanic whites at 7.4 percent. Cardiovascular death rates vary by race in the state, with all races experiencing 325.9 deaths per 100,000 population in contrast to blacks who experience 394.7 deaths per 100,000 population.

**State Health Department Web Site:** [www.health.state.ga.us](http://www.health.state.ga.us)



DETERMINANTS	2008		2007		2003		1990	
	VALUE	RANK	VALUE	RANK	VALUE	RANK	VALUE	RANK
<b>PERSONAL BEHAVIORS</b>								
Prevalence of Smoking (Percent of population)	19.4	22	19.9	23	23.2	25	31.8	39
Prevalence of Binge Drinking (Percent of population)	12.3	9	12.1	10	12.4*	10	—	—
Prevalence of Obesity (Percent of population)	28.7↑	40	27.1	38	23.5	36	10.8	15
<b>COMMUNITY &amp; ENVIRONMENT</b>								
High School Graduation (Percent of incoming ninth graders)	61.7	48	61.2	48	51.4*	49*	65*	48
Violent Crime (Offenses per 100,000 population)	493	34	471	32	497	33	576	38
Occupational Fatalities (Deaths per 100,000 workers)	6.0	25	6.8	33	5.3	25	14.1*	42
Infectious Disease (Cases per 100,000 population)	29.4↓	47	31.7	46	36.0	46	39.7	37
Children in Poverty (Percent of persons under age 18)	20.6	41	20.4	40	19.5	37	25.1	42
Air Pollution (Micrograms of fine particles per cubic meter)	15.9	50	16.0	50	17.0	47.0	—	—
<b>PUBLIC &amp; HEALTH POLICIES</b>								
Lack of Health Insurance (Percent without health insurance)	17.6	41	18.0	40	15.8	37	16.0	38
Public Health Funding (Dollars per person)	\$75↓	22	\$96	14	—	—	—	—
Immunization Coverage (Percent of children ages 19 to 35 months)	80.8↓	19	83.3	13	80.4	9	—	—
<b>CLINICAL CARE</b>								
Adequacy of Prenatal Care (Percent of pregnant women)	68.3**	—	73.6	31	79.43*	18	66.8*	35
Primary Care Physicians (Number per 100,000 population)	101.8	38	103.0	36	—	—	—	—
Preventable Hospitalizations (Number per 1,000 Medicare enrollees)	82.0	35	82.0	35	87.9	38	—	—
<b>ALL DETERMINANTS</b>								
	-7.1	44	-6.6	42	-3.6	38	-1.8	35
<b>HEALTH OUTCOMES</b>								
Poor Mental Health Days (Days in previous 30 days)	3.6	38	3.4	34	3.6	40	—	—
Poor Physical Health Days (Days in previous 30 days)	3.6	30	3.3	17	3.2	20	—	—
Geographic Disparity (Relative standard deviation)	12.8	35	13.6	38	—	—	—	—
Infant Mortality (Deaths per 1,000 live births)	8.0	40	8.3	43	8.5	43	12.6	47
Cardiovascular Deaths (Deaths per 100,000 population)	325.9↓	40	339.3	41	375.3	0	442.2	44
Cancer Deaths (Deaths per 100,000 population)	196.6	26	199.5	25	204.1	23	200.6	30
Premature Death (Years lost per 100,000 population)	8,417↓	39	8,609	41	8,924	42	10,202	48
<b>ALL HEALTH OUTCOMES</b>								
	-0.7	38	-1.9	36	-3.6	40	-5.9	48
<b>OVERALL</b>								
	-7.8	41	-8.5	40	-7.6	41	-7.7	43

↓ and ↑ indicate major increases and decreases in the last year. — indicates data not available. \*Data may not be comparable. \*\*See measure description for full details.